



# BZ876 T

## Safety Relay 36V DC

B+Z Art. Nr. 563

### According to standard EN 50155

Electronic devices in rolling stock



Content:

Page:

|    |                        |           |
|----|------------------------|-----------|
| 1. | Application / Function | 2         |
| 2. | Technical data         | 2 / 3 / 4 |
| 2. | Block diagram          | 4         |
| 4. | Measures               | 4         |

**B + Z Elektronik AG**  
CH-8108 Dällikon  
Tel: +41(0)44 8440355  
[www.bahnelektronik.ch](http://www.bahnelektronik.ch)

Seite: 1/5



## Application / function

### Application

This safety relay is designed for use in industrial continuous operation applications. Safety relay according to standard EN61810 type A with forcibly guided contacts and integrated circuit protection for mounting on standard T Rail system.

The LED on the front panel indicates when power is applied to the coil.

- Contacts : 4 NO / 2 NC
- Nominal voltages available for 15VDC / 24VDC / 48VDC / 72VDC / 110V DC
- With reverse polarity protection, overvoltage surge protection, LED status indicator
- Wire connector : 1 wire terminal block on all pins
- Screwless front connector - wires directly plugable; AWG 24-16
- Optional front connector block for looping through on all pins available

### Technical data

Type designation: **BZ876T 36V (Example for 36V version)**

#### • Standards

The product is manufactured in accordance with the following standards:

ISO 9001:2015

Electronic equipment used on rolling stock: EN50155

Isolation: EN50124-1

Shock and vibration: EN50155/EN61373

Fire protection according to EN 45545

The standards applicable to this product are dependent on the version available at the time of development.

#### • Operating Voltage

Nominal voltage: 36V DC  
Tolerance according to railway standard: -30% +25%

Current : ca. 28mA at 36VDC

Hold power: 0.2Watt

Protection circuits: Reverse polarity protection, protective circuit for relay coil and Transients supression diodes



B + Z Elektronik AG

Erstellt: 09.02.2006

Änderung: 19.07.2014

Index:

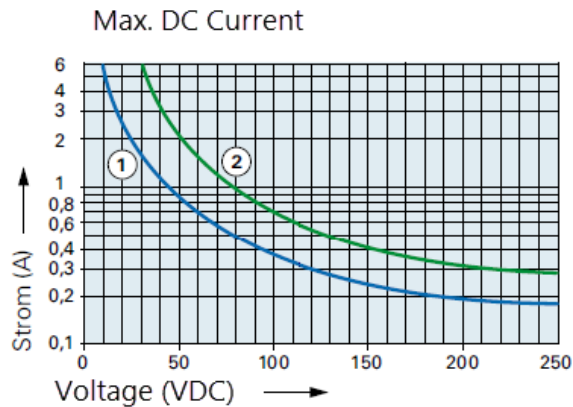
Datei: BZ876T\_36V\_e\_kd.doc

Seite: 2/5

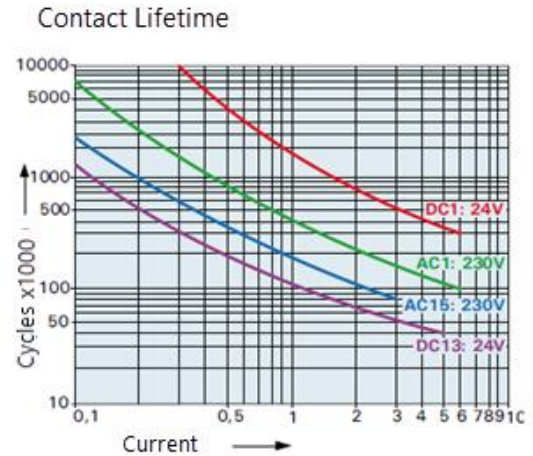
**BZ876T**  
**Safety Relay 36VDC**

## • Contact loads

Relay type: A, according to EN61810  
 Max. load current: according to table ohm = 50V/2A, induktive = 50V/0.8A  
 Minimum current: 10mA at 10 VDC



- 1) Inductive load L/R 40 ms  
 2) Ohm load



Max. Switching cycles DIN EN 60947-4-1 / EN 60947-5-1):  
 AC 1: 250V/6A AC 15: 230V/3A  
 DC 1: 24V/6A DC 13: 24V/5A/0,1 Hz  
 UL 508: B300 / R300

## • Screwfree front edge connector

14-pin edge connector: WAGO (codeable)

## • Counter connector (optional)

14-pin female connector strip: WAGO single row or double row available  
 Grid 5.08mm. (not included at delivery)

## • Internal electrical protection

Transzorbdiode protecting against voltage spikes  
 Polarity protection diode

## Mechanical data



B + Z Elektronik AG

Erstellt: 09.02.2006  
 Änderung: 19.07.2014  
 Index:  
 Datei: BZ876T\_36V\_e\_kd.doc Seite: 3/5

BZ876T  
 Safety Relay 36VDC

Measures (WxHxD): 22,5 x 85 x 72mm  
Weight: ca. 95g (without counterconnector)

### • Materials

Housing: Plastic  
PCB: Epoxy resin

Mounting: Horizontal on standard Rail 35mm, (EN-50022-35)  
Connector type: 14-pin single row terminal strip, Type WAGO

### • Marking / Labeling

Wiring label on housing

## Other conditions

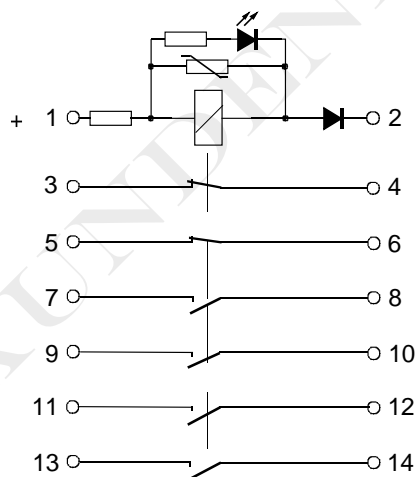
### • Climatic conditions

Environment temperature: -20°C bis +70°C Class T3  
Humidity : max 90% rF, at30°C, non condensing.

### • Disposal / Recycling

According to local regulations

## Connection / Wiring diagram



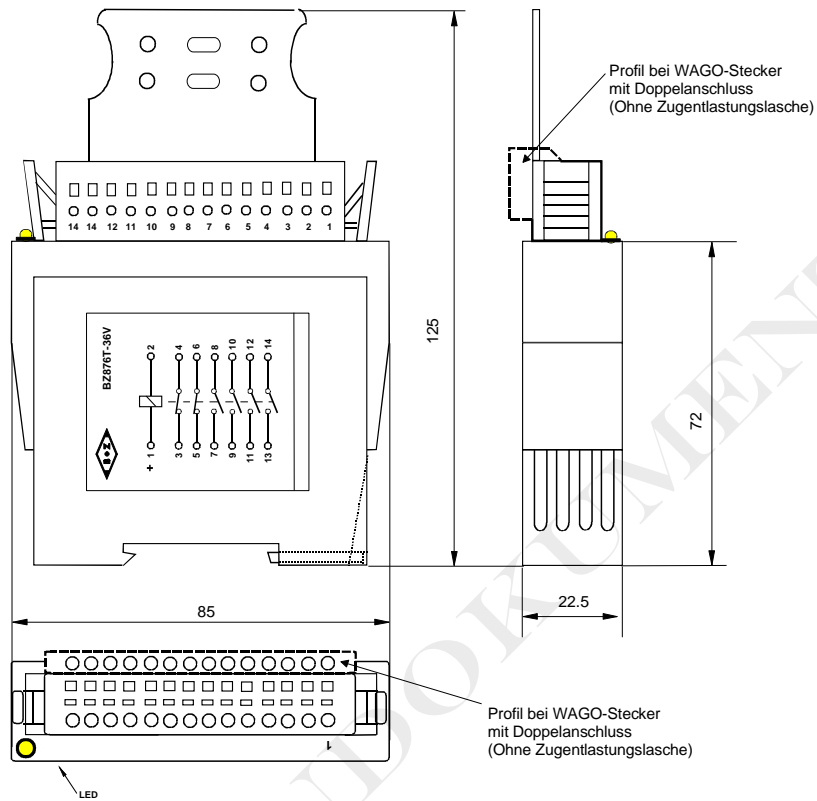
B + Z Elektronik AG

Erstellt: 09.02.2006  
Änderung: 19.07.2014  
Index:  
Datei: BZ876T\_36V\_e\_kd.doc

Seite: 4/5

BZ876T  
Safety Relay 36VDC

## Measures / mounting



B + Z Elektronik AG

Erstellt: 09.02.2006  
 Änderung: 19.07.2014  
 Index:  
 Datei: BZ876T\_36V\_e\_kd.doc

Geprüft:  
 Geprüft:  
 Seite: 5/5

BZ876T  
 Safety Relay 36VDC