

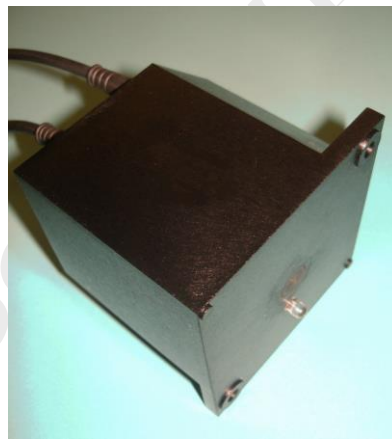


BZ909

Voltage indicator
45V...3500V AC/DC
B+Z Art. Nr. 705

According to standard EN 50155

Electronic devices in rolling stock



Content:	Page:
1. Function	2
2. Technical data	2
3. Block diagram	3
4. Drawings / mounting	3

Application / function

Application

This voltage indicator is typically used to indicate dangerous tensions, in particular in the traction circuit or other high voltage system circuits as well as at the train busbar. The device needs no other external power – it is self powered by the high voltage connection.

The built in LED on the front side flashes proportionally to the applied tension.

Flashing rates:

Table of frequencies (average values)

AC/ DC Voltage	LED flashes per second(Hz)
4000V	9,15
3000V	7,3
2000V	5,2
1000V	2,8
500V	1,45
250V	0,72
100V	0,27

Technical data

Type designation: **BZ909**

• Standards

The product is manufactured in accordance with the following standards:

ISO 9001:2015

Electronic equipment used on rolling stock: EN50155

Electromagnetic compatibility: EN50121-3-2

Isolation: EN50124-1

Shock and vibration: EN50155/EN61373

Fire protection according to EN 45545

The standards applicable to this product are dependent on the version available at the time of development.

• Input voltage

Voltage range : 45 . . . 3500V AC/DC

• Electrical Protective Measure

Air distance isolation : $\geq 40\text{mm}$

Tracking distance isolation : $\geq 70\text{mm}$



B + Z Elektronik AG

Created: 19.07.2014

Modified:

Index:

File: BZ909_e_kd.doc

Page: 2/4

BZ909
Voltage Indicator
45 bis 3500V AC/DC

Mechanical data

- **Measures**

Measures (WxHxD): 80x80x71mm
Weight with cables: ca. 880 g
Weight without cables: ca. 580 g

- **Materials**

Housing : Plastic
Casting resin : Araldit Formula
PCB: Epoxy resin

- **Mounting**

Fixing : 2 pcs. M5 Screws

- **Wiring**

2 high voltage cables single-wired, 1.5mm², each 2m long

Other conditions

- **Climatic conditions**

Environment temperature: -40°C bis +70°C Class T3
Humidity : max 90% rF, at30°C, non condensing.

- **Labels**

Label on housing showing wiring details
Warning label (high voltage danger)

- **Disposal**

According to local regulations



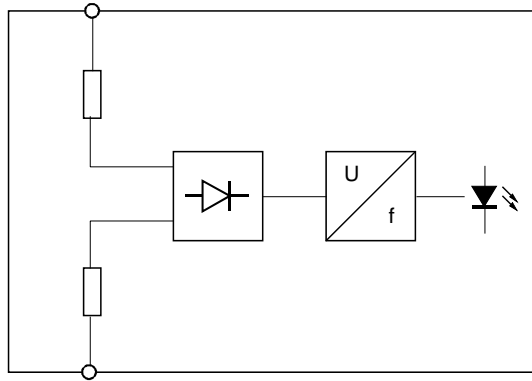
B + Z Elektronik AG

Created: 19.07.2014
Modified:
Index:
File: BZ909_e_kd.doc

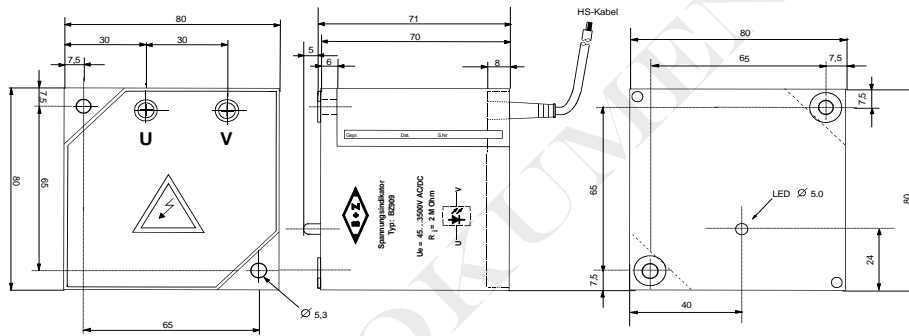
Page: 3/4

BZ909
Voltage Indicator
45 bis 3500V AC/DC

Connection / Wiring diagram



Measures / mounting



B + Z Elektronik AG

Created: 19.07.2014
 Modified:
 Index:
 File: BZ909_e_kd.doc

Geprüft:
 Geprüft:
 Page: 4/4

BZ909
 Voltage Indicator
 45 bis 3500V AC/DC